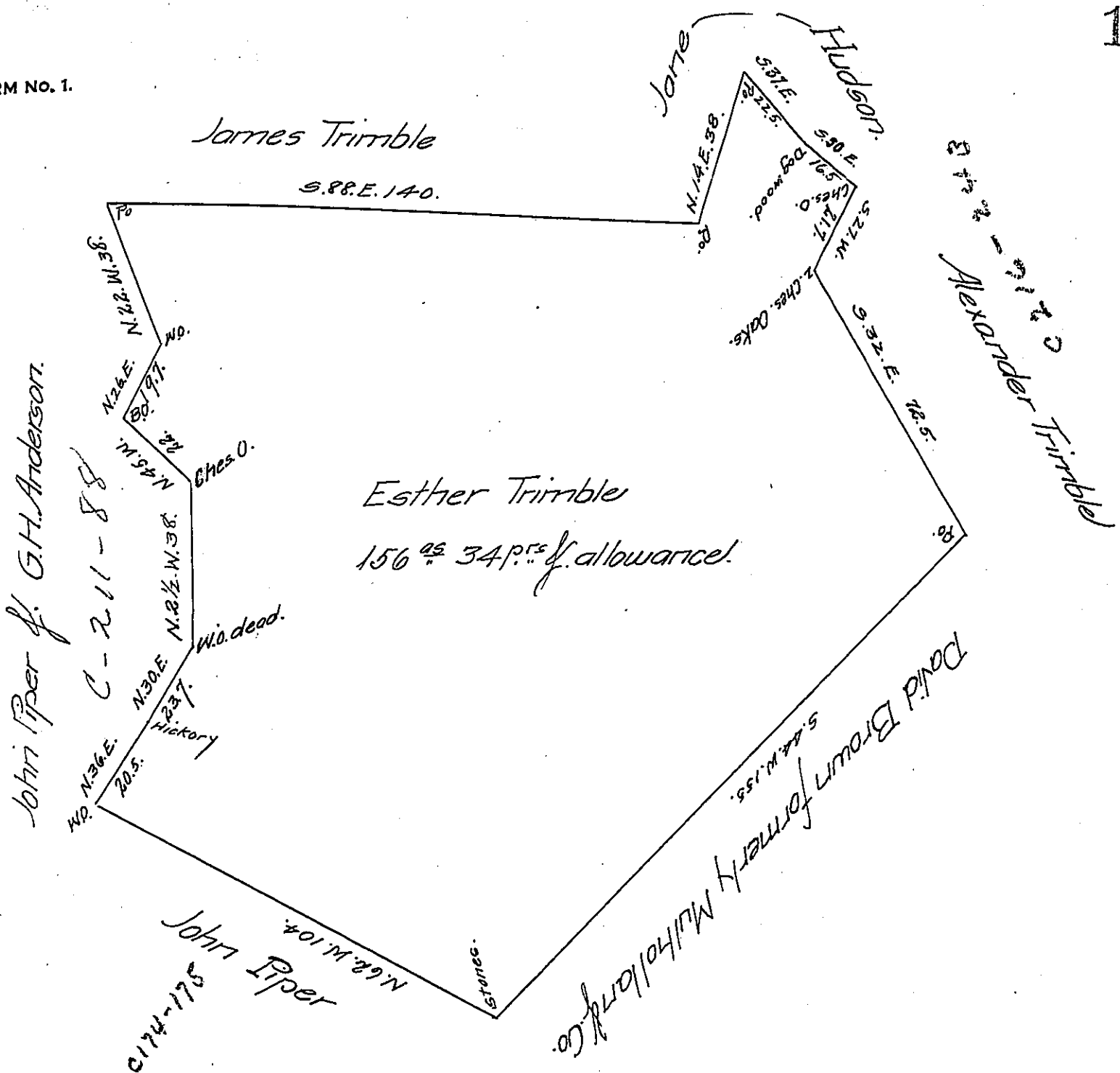


FORM NO. 1.



January 3<sup>rd</sup> 1870. Surveyed in pursuance of a Warrant granted to Esther Trimble, dated Dec. 20<sup>th</sup> 1869. Situate on the foot of Chestnut Ridge Derry Township Westmoreland County Pa. Containing one hundred and fifty six acres & thirty four perches & the usual allowance.

W. P. Barnhart C.S.

J. M. Campbell Esquire  
 Surveyor General of Penn<sup>a</sup>

IN TESTIMONY that the above is a copy of the original remaining on file in the Department of Internal Affairs of Pennsylvania, made conformably to an Act of Assembly approved the 16th day of February 1833, I have hereunto set my hand and caused the Seal of said Department to be affixed at Harrisburg, this fifteenth day of May 1907.

*Henry Howell*  
 Secretary of Internal Affairs.